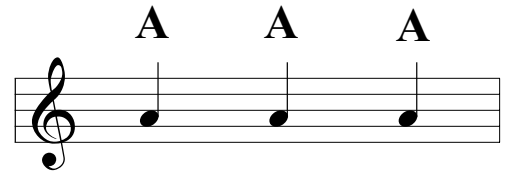
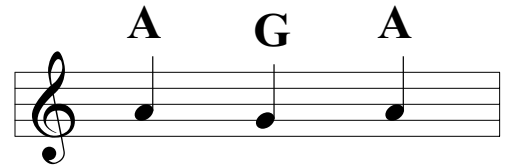


StaffSongs #1

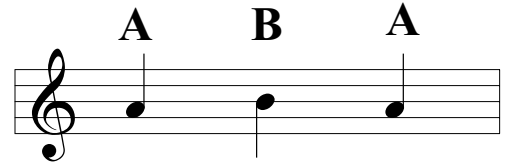
The note **A** is written in the second space of the staff.



The switch from A down to **G** and back looks like this. **G** is written on the second line of the staff.

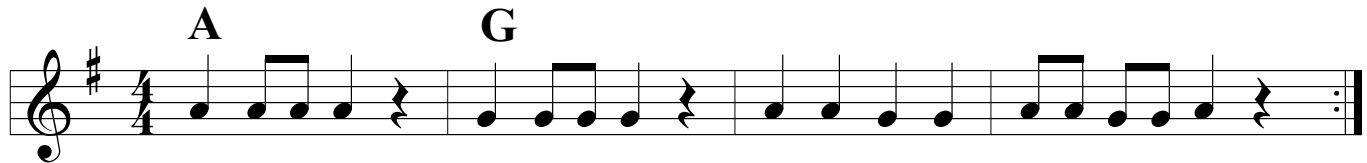


The switch from A up to **B** and back looks like this. **B** is written on the third line of the staff.



Looking Down

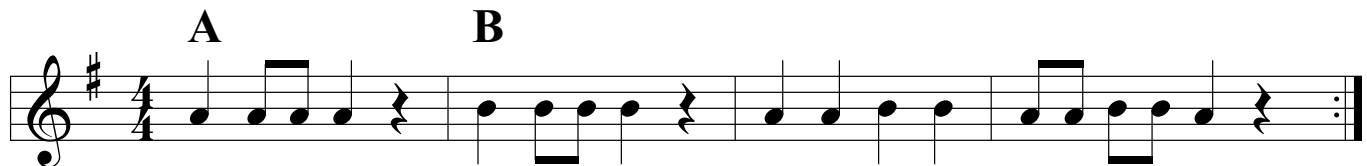
Intro: 4 measures



Notice the repeat sign

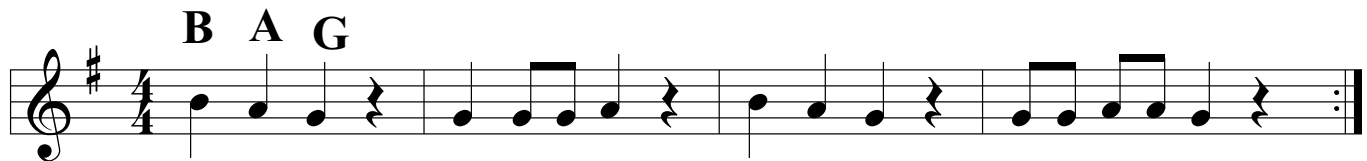
Looking Up

Intro: 4 measures



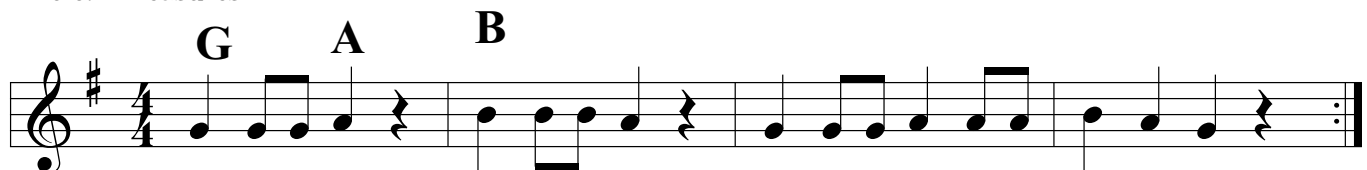
Try for Three

Intro: 2 measures



Good to be Home

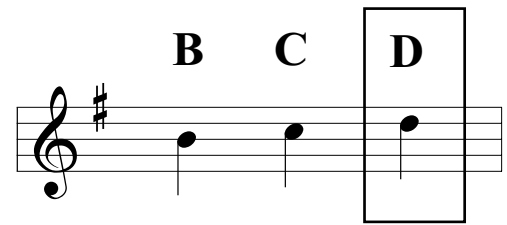
Intro: 2 measures



StaffSongs #8

This page uses the new note **D**. It is written on the fourth line of the staff.

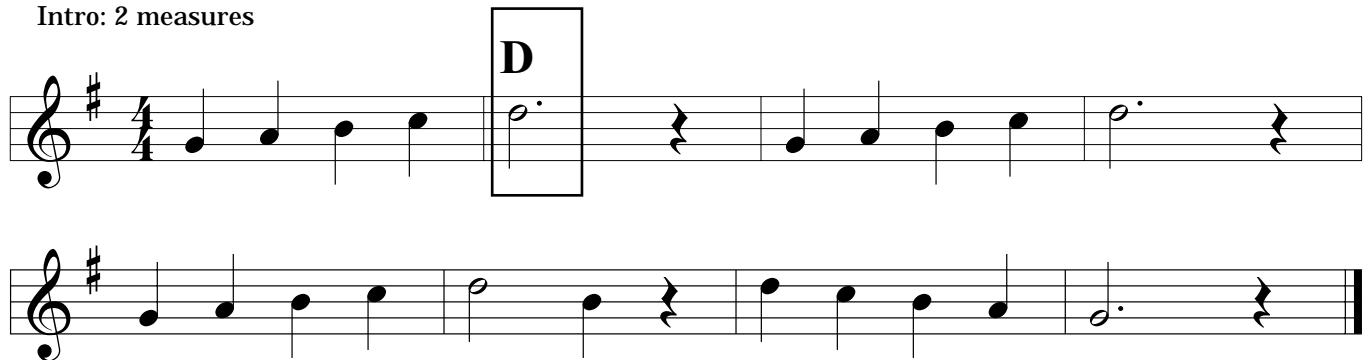
The switch from B to C and up to **D** looks like this.



Each of these songs uses the new note. It is highlighted the first time, then you have to watch carefully for it after that.

Take the Stairs

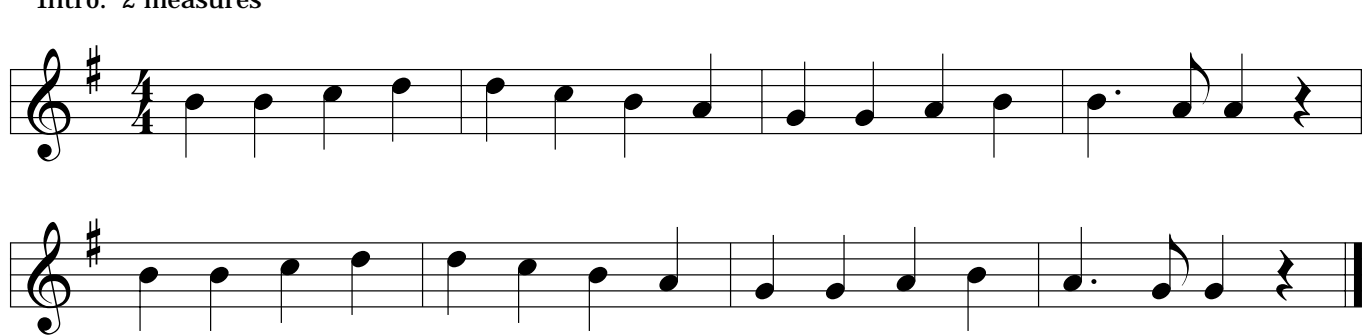
Intro: 2 measures



Ode to Joy

Beethoven

Intro: 2 measures



Fire in the Sky

Intro: 4 measures

