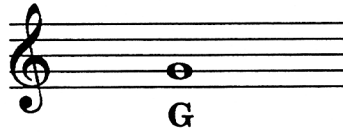


Music Theory - Lesson Two

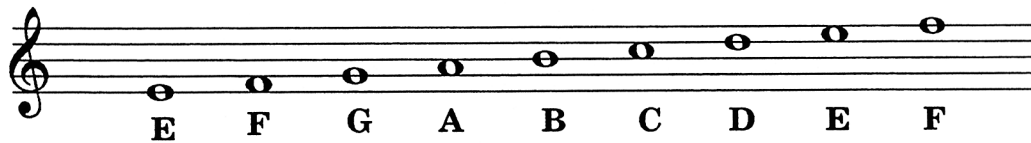
The Treble or G Clef

A “clef” is a sign at the beginning of each staff that locates one note on the staff. From this note we can find all the other notes of that clef.

The treble clef establishes the note G by circling the second line.



Musical notes are named after the first 7 letters of the alphabet (A through G)



An easy way to remember the lines and spaces of the treble clef: the lines make up the saying “Every Good Boy Deserves Fudge”, while the spaces spell the word FACE.

Exercise: At the beginning of the staff draw a treble clef. Then name the notes on the staff. An example is shown for you.

ex.	1.	2.	3.	4.	5.	6.	7.	8.	9.
<u>E</u>	—	—	—	—	—	—	—	—	—

Exercise: At the beginning of the staff draw a treble clef. Then draw the notes on the staff. An example is shown for you.

ex.	1.	2.	3.	4.	5.	6.	7.	8.	9.
<u>F</u>	<u>E</u>	<u>G</u>	<u>B</u>	<u>C</u>	<u>F</u>	<u>D</u>	<u>C</u>	<u>A</u>	<u>B</u>