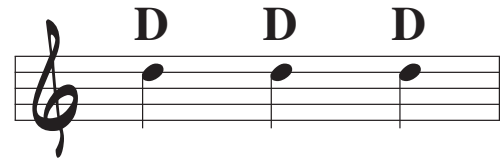


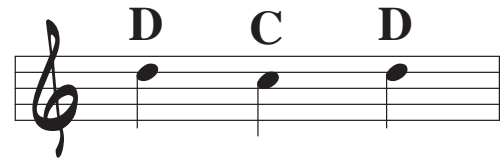
ApRo Music Soundstart for Guitar

#1

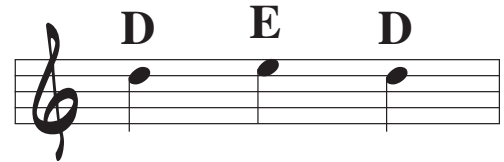
The note D is written on the fourth line of the staff.



The switch from D down to C and back looks like this. C is written in the third space of the staff.



The switch from D up to E and back looks like this. E is written in the top (fourth) space the staff.



Looking Down

Intro: 2 measures



Notice the repeat sign

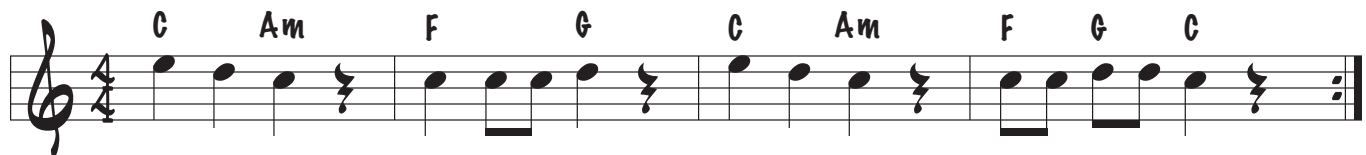
Looking Up

Intro: 2 measures



Try for Three

Intro: 2 measures



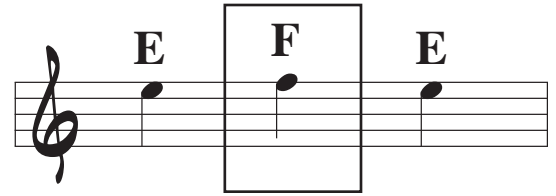
Good to be Home

Intro: 2 measures



This page uses the new note F. It is written on the top (fifth) line of the staff.

The switch from E up to F and back looks like this.



Boil That Cabbage Down

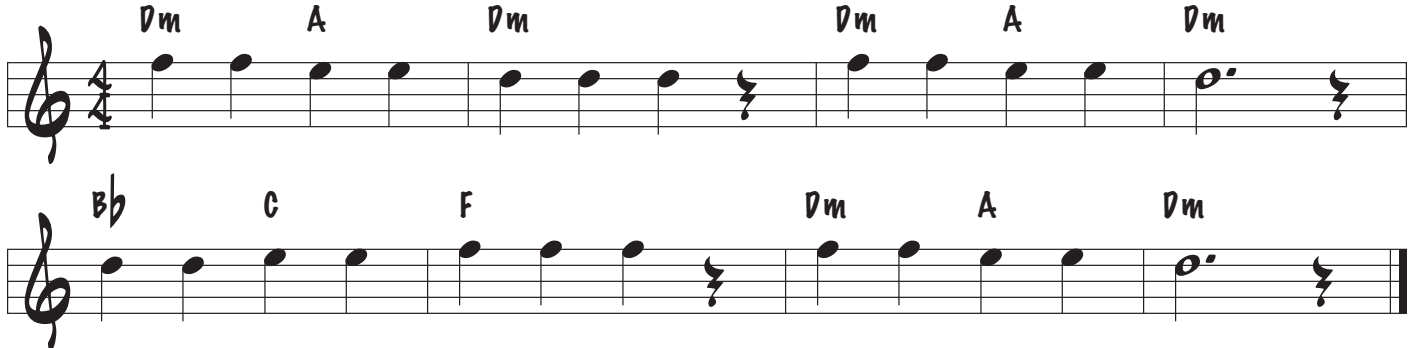
Intro: 2 measures



Song repeats four times, with fills between

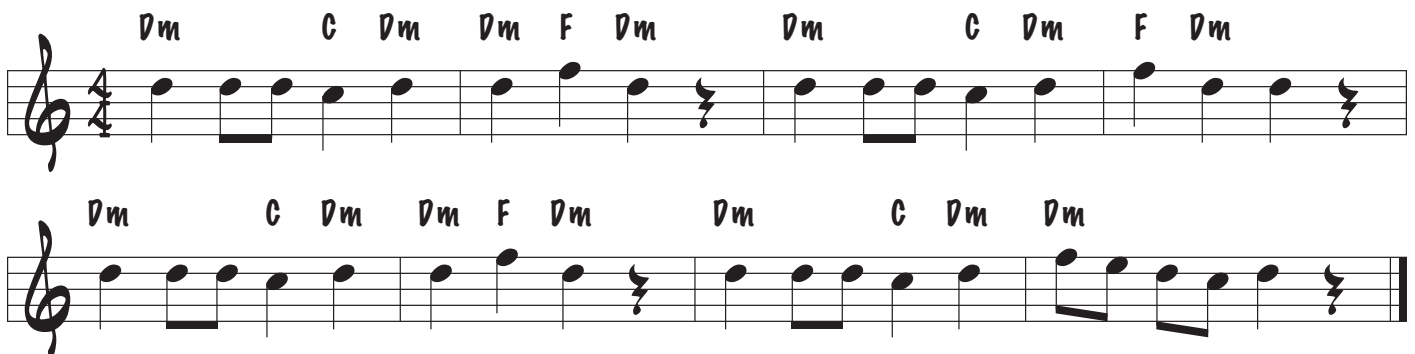
That Fateful Night

Intro: 4 measures



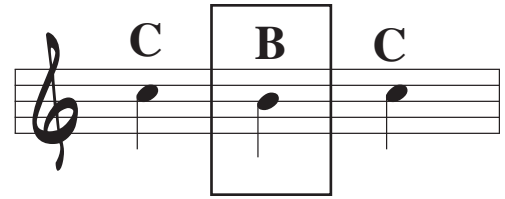
Night Riders

Intro: 2 measures



This page uses the new note B. It is written on the third line of the staff.

The switch from C down to B and back looks like this.



Come On Down

Intro: 2 measures

Musical notation for 'Come On Down' in 4/4 time. The first staff has notes G4, A4, B4, C5 with chords C, G, Am, Em, F, C, G above. The second staff has notes G4, A4, B4, C5, G4, C5 with chords C, G, Am, Em, F, G, C above. The piece ends with a double bar line.

Music Box

Intro: 1 measure

Musical notation for 'Music Box' in 4/4 time. The first staff has notes G4, A4, B4, C5 with chords C, G, C, G, C, G, G7, C above. The second staff has notes G4, A4, B4, C5, G4, C5 with chords C, G, C, G, C, G, G7, C above. The piece ends with a double bar line.

Go For Baroque

Intro: 2 measures

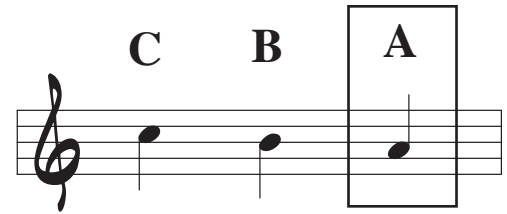
Musical notation for 'Go For Baroque' in 4/4 time. The first staff has notes G4, A4, B4, C5 with chords C, G, G7, C above. The second staff has notes G4, A4, B4, C5 with chords C, G, G7, C above. The piece ends with a double bar line.

ApRo Music Soundstart for Guitar



This page uses the new note A . It is written in the second space of the staff.

The switch from C to B and down to A looks like this.



Each of these songs uses the new note.

Another Fateful Night

Intro: 4

Submarine

Intro: 2

Lemon Merengue

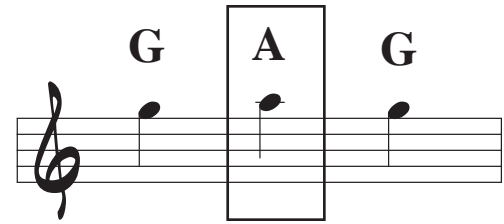
Intro: 2

Russian Dance

Intro: 4

This page uses the new note A above the staff.
It is written on the first ledger line above the staff.

The switch from G to A and back looks like this.



Each of these songs uses the new note.

Reaching High

Intro: 2

Star Gazing

Intro: 2

Top of the Hill

Intro: 2