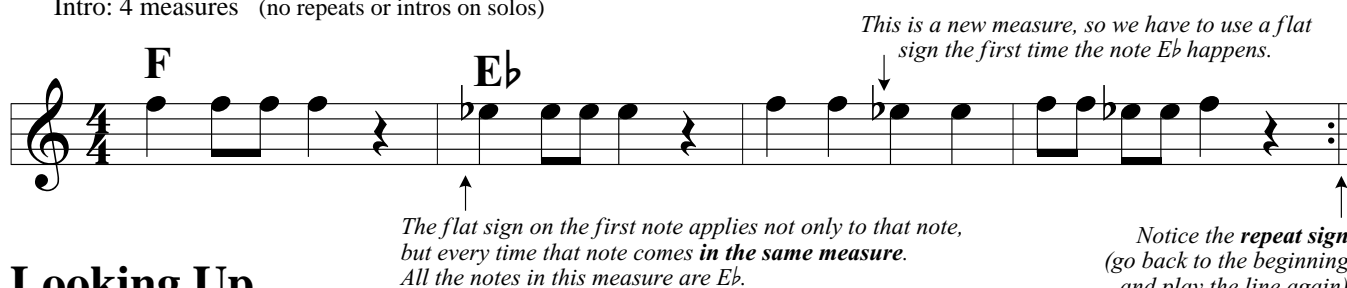


Looking Down

CD #1 Tracks 1 (♩=104), 21 (♩=92), 42 (solos)

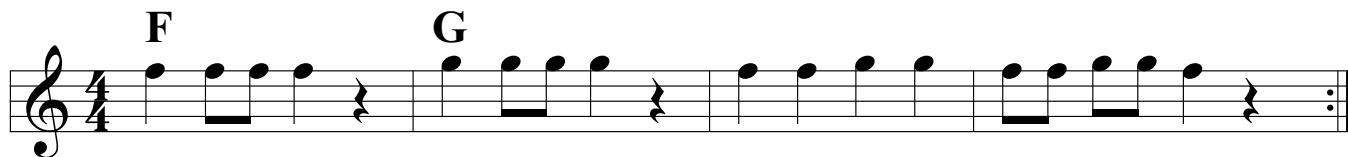
Intro: 4 measures (no repeats or intros on solos)



Looking Up

CD #1 Tracks 2 (♩=104), 22 (♩=92), 42 (solos)

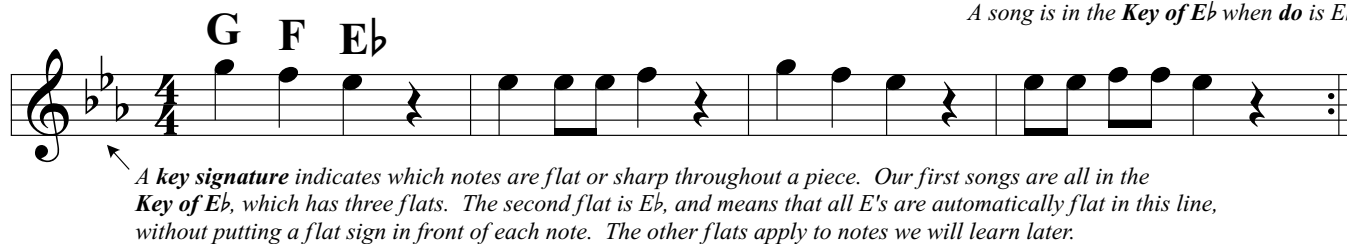
Intro: 4 measures (no repeats or intros on solos)



Try for Three

CD #1 Tracks 3 (♩=104), 23 (♩=96), 43 (solos)

Intro: 2 measures (no repeats or intros on solos)



Good to be Home

CD #1 Tracks 4 (♩=92), 24 (♩=80), 44 (solos)

Intro: 2 measures (no repeats or intros on solos)



Lesson 2

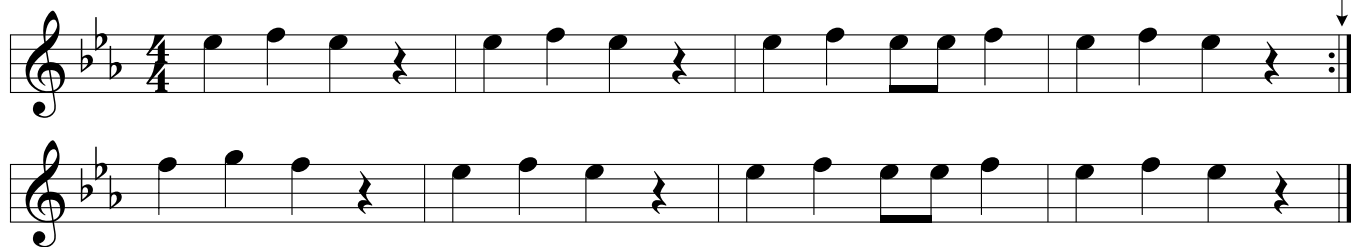
Songs Using Three Notes

First Blues

CD #1 Tracks 5 (♩=132), 25 (♩=108), 26 (♩=120), 45 (solos)

Intro: 2 measures (1 measure intro between solos)

Notice this line is repeated



Oom Pah Band

CD #1 Tracks 6 (♩=104), 27 (♩=80), 28 (♩=92), 46 (solos)

Intro: 2 measures (2 measure intro between solos)

This line is played twice. Use the **first ending** the first time, and the **second ending** the second time.



Smooth Sailing

CD #1 Tracks 7 (♩=66), 47 (solos)

Intro: 2 measures (no repeats or intros on solos)

The curved lines indicate **slurs**. Play the notes in one breath without tonguing, connecting the notes as smoothly as possible.



Closet Key

CD #1 Tracks 8 (♩=100), 29 (♩=76), 30 (♩=88), 48 (solos)

Intro: 2 measures (2 measure intro between solos; no repeats on solos)

Traditional Folk Song



song repeats after a two-measure drum fill

Holding Out

CD #1 Tracks 9 (♩=80), 49 (solos)

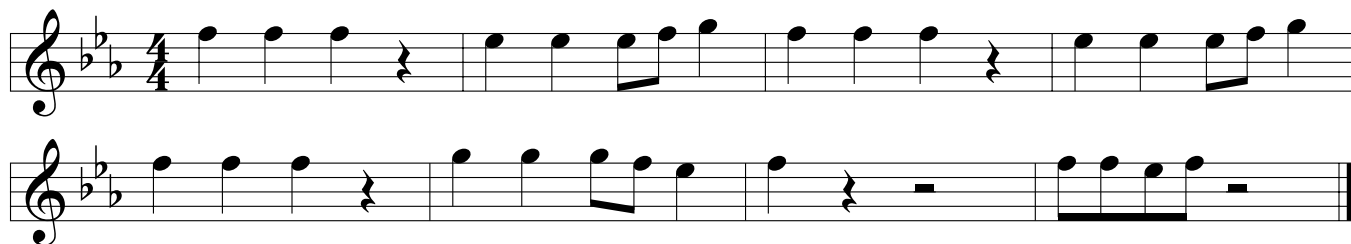
Intro: 2 measures (no intro between solos)



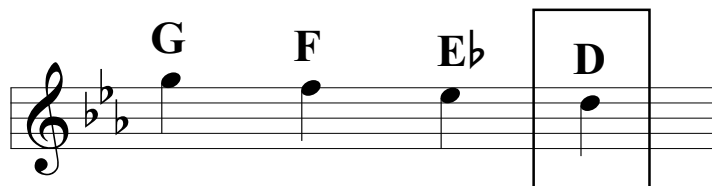
Solid State

CD #1 Tracks 10 (♩=100), 50 (5 solos)

Intro: 4 measures (2 measure intro between solos)



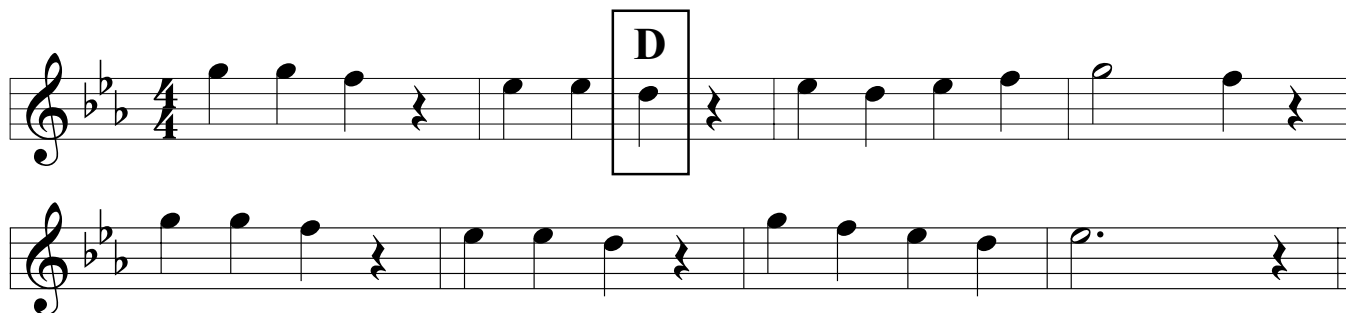
Lesson 3



notice the
right hand
little finger is
not pressed for
this note

Come on Down

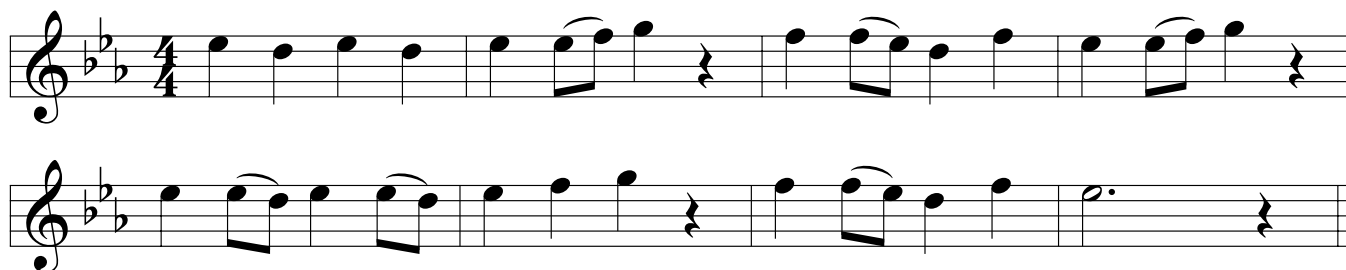
CD #1 Tracks 11 (♩=92), 31 (♩=80), 51 (solos)
Intro: 4 measures (2 measure intro between solos)



Music Box

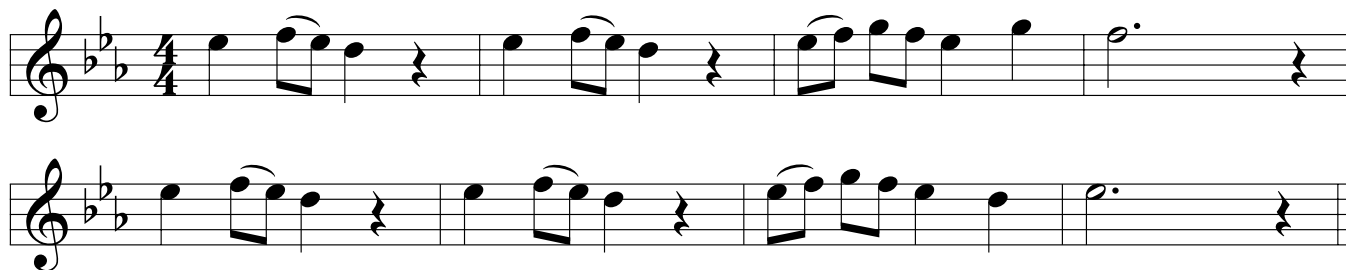
CD #1 Tracks 12 (♩=100), 32 (♩=88), 52 (solos)
Intro: 4 measures (2 measure intro between solos)

slur each pair of notes that is connected with a curved line.



Walk in the Sun

CD #1 Tracks 13 (♩=96), 33 (♩=84), 53 (solos)
Intro: 2 measures (2 measure intro between solos)



Lesson 4

higher notes require the use of **ledger lines** to extend above the staff

The **left hand** little finger is used for this note.

Boil That Cabbage Down

CD #1 Tracks **14** (♩=96), **34** (♩=84), **54** (solos), **60** (special version)

Intro: 2 measures (no repeats or intros on solos)

Traditional Folk Song

This **third** flat in the **key signature** means that all A's are automatically flat in this line, without putting a flat sign in front of each note.

On Track 60, the song repeats four times, with 2 measure intros before the last two times.

That Fateful Night

CD #1 Tracks **15** (♩=112), **55** (solos)

Intro: 4 measures (2 measure intro between solos)

Night Riders

CD #1 Tracks **16** (♩=112), **35** (♩=100), **56** (8 solos)

Intro: 2 measures (2 measure intro between solos)

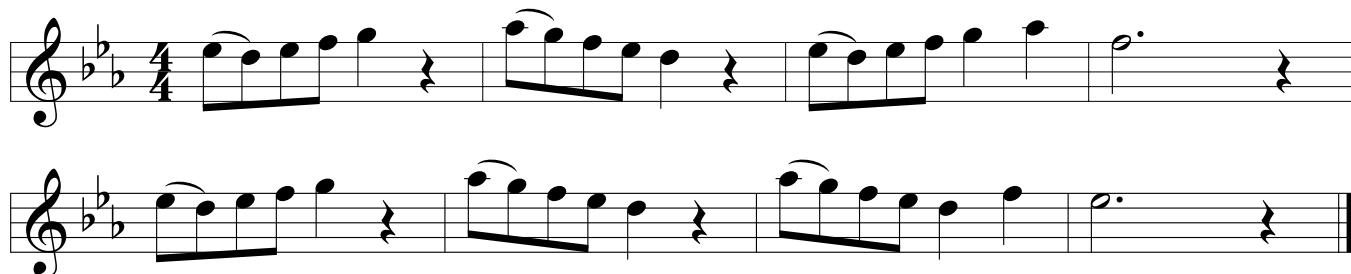
Lesson 5

Songs Using Five Notes

Sun Birds

CD #1 Tracks 17 (♩=88), 36 (♩=76), 57 (solos)

Intro: 2 measures (2 measure intro between solos)



Choppers

CD #1 Tracks 18 (♩=108), 37 (♩=84), 38 (♩=96), 58 (solos)

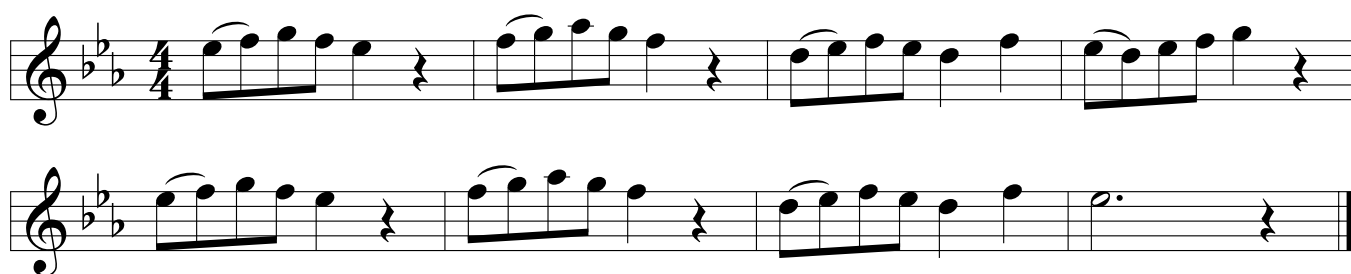
Intro: 4 measures (1 measure intro between solos)



Ragtime

CD #1 Tracks 19 (♩=92), 39 (♩=80), 59 (5 solos)

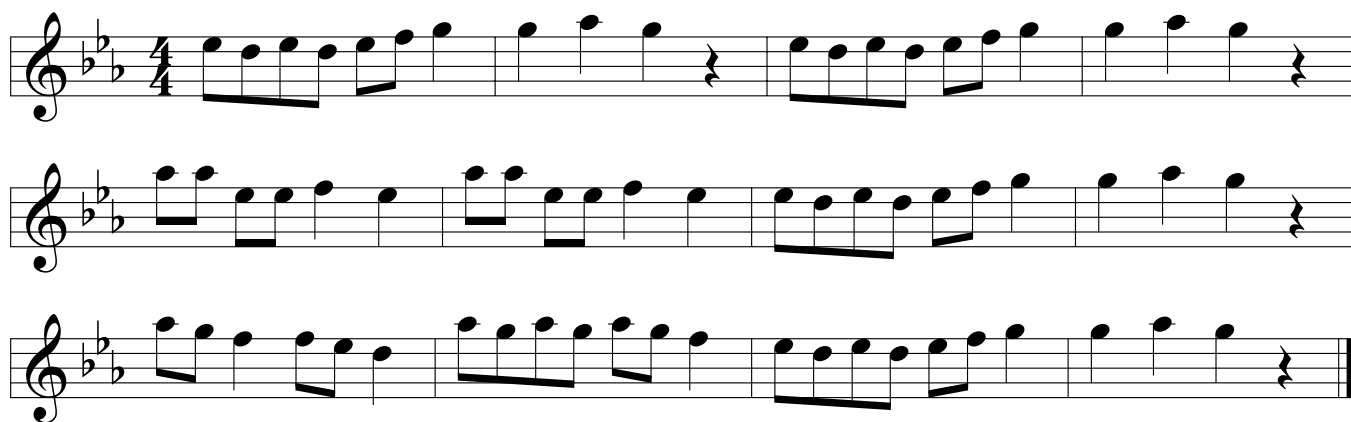
Intro: 2 measures (2 measure intro between solos)



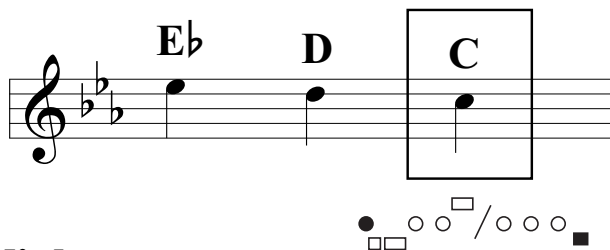
The Gathering

CD #1 Tracks 20 (♩=96), 40 (♩=72), 41 (♩=84)

Intro: 2 measures



Lesson 6



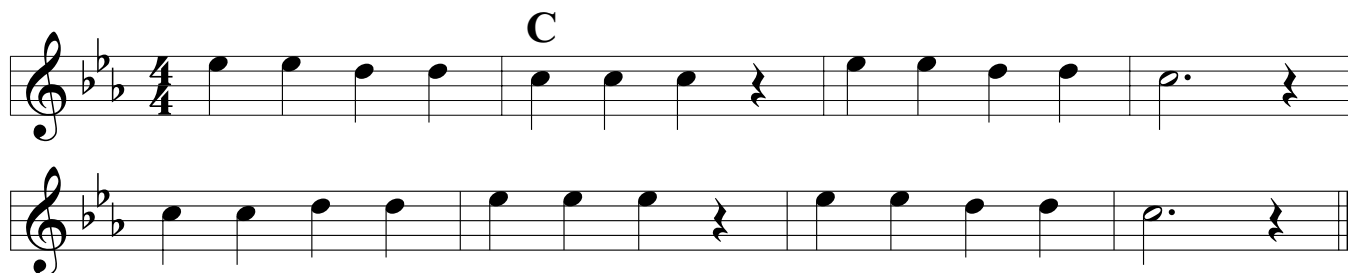
*Most of your fingers are off
for this note.*

*It is very important to use
proper hand position so the
flute is in balance.*

Another Fateful Night

CD #2 Tracks 1 (♩=112), 41 (solos)

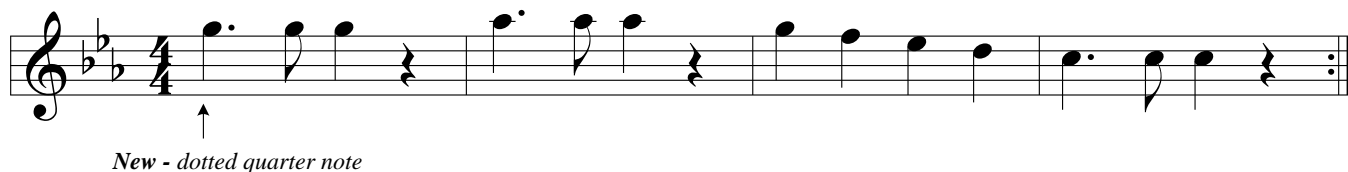
Intro: 4 measures (2 measure intro between solos)



Submarine

CD #2 Tracks 2 (♩=108), 21 (♩=96), 42 (solos)

Intro: 2 measures (2 measure intro between solos)



Russian Dance

CD #2 Tracks 3 (♩=88), 22 (♩=76), 43 (solos)

Intro: 2 measures (2 measure intro between solos)



Snake Dance

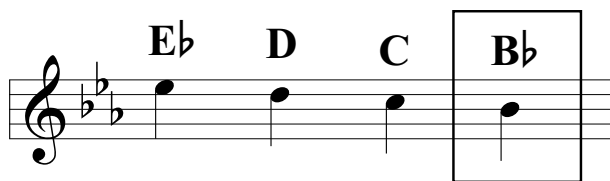
CD #2 Tracks 4 (♩=88), 23 (♩=72), 24 (♩=80)

Intro: 2 measures

Traditional

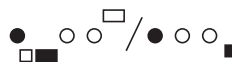


Lesson 7



Ground Floor

CD #2 Tracks 5 (♩=100), 25 (♩=88), 44 (solos)
Intro: 2 measures (2 measure intro between solos)



Notice that this note uses the first finger of each hand.



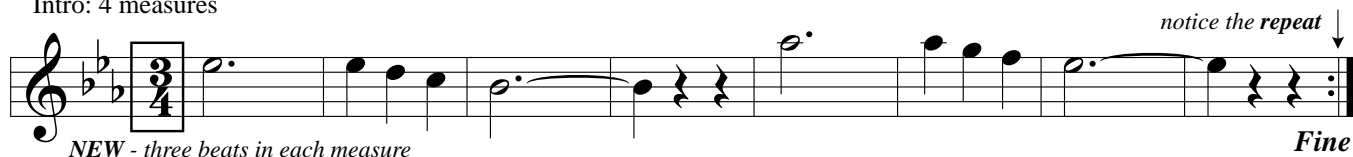
Marching Down

CD #2 Tracks 6 (♩=112), 26 (♩=100), 45 (solos)
Intro: 2 measures (2 measure intro between solos)



Simpler Times

CD #2 Tracks 7 (♩=152), 27 (♩=132)
Intro: 4 measures



Aura Lee

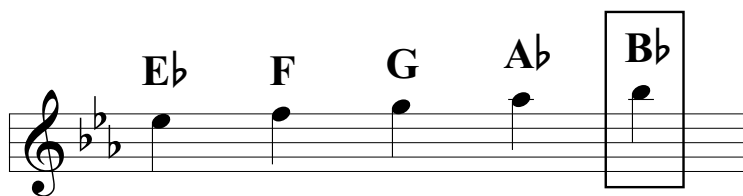
CD #2 Track 8 (♩=88)
Intro: 4 measures

this means go back to the beginning → D.C. al Fine

Traditional



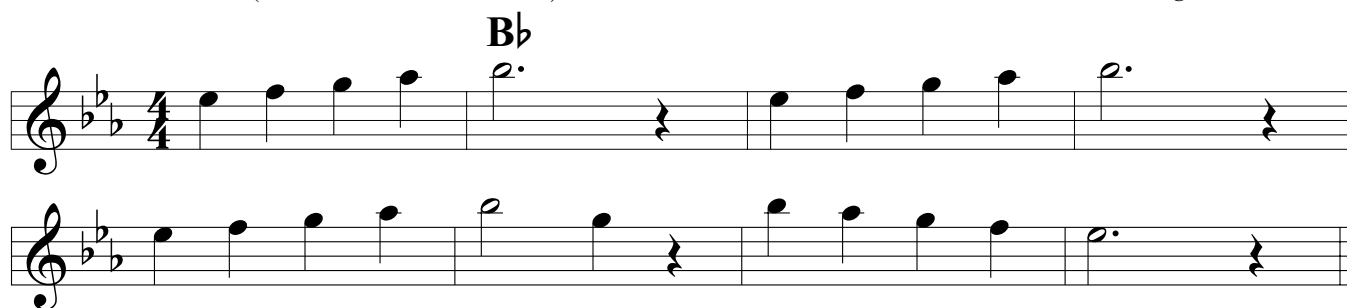
Lesson 8



This fingering is the same as for low Bb. You make a small adjustment with your lips to focus on the higher sound.

Take the Stairs

CD #2 Tracks 9 (♩=104), 28 (♩=92), 46 (solos)
Intro: 2 measures (2 measure intro between solos)



Ode to Joy

CD #2 Tracks 10 (♩=126), 29 (♩=112), 47 (solos)
Intro: 2 measures (2 measure intro between solos)

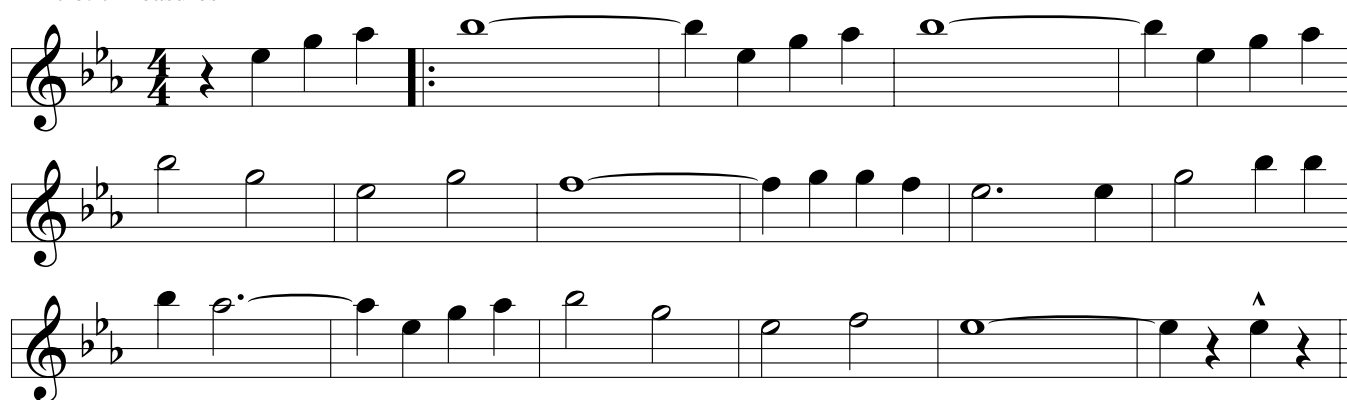
L. van Beethoven



O When the Saints

CD #2 Tracks 11 (♩=176), 30 (♩=132), 31 (♩=152)
Intro: 7 measures

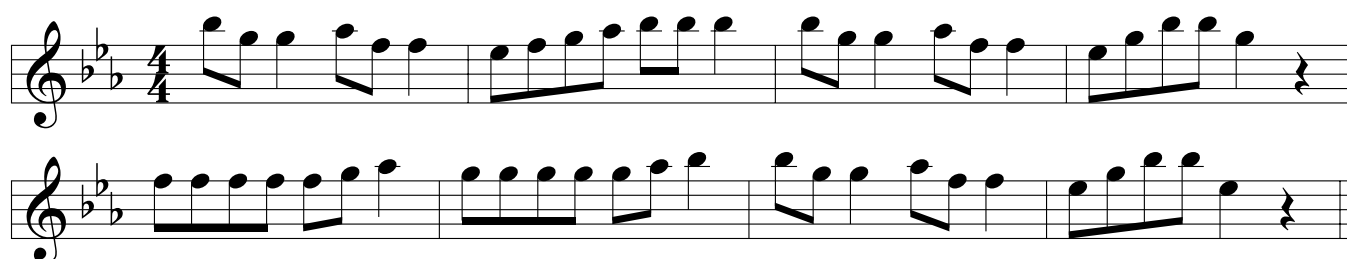
Traditional



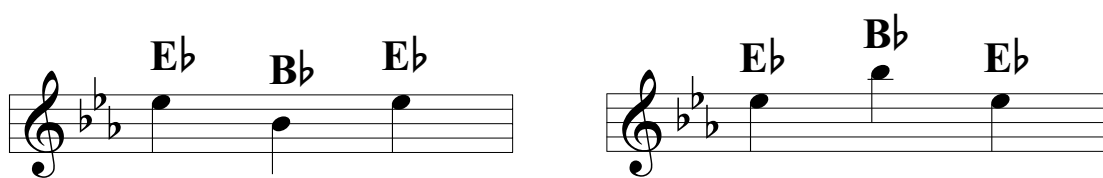
Lightly Row

CD #2 Tracks 12 (♩=76), 32 (♩=88), 48 (solos)
Intro: 2 measures (1 measure intro between solos)

Traditional



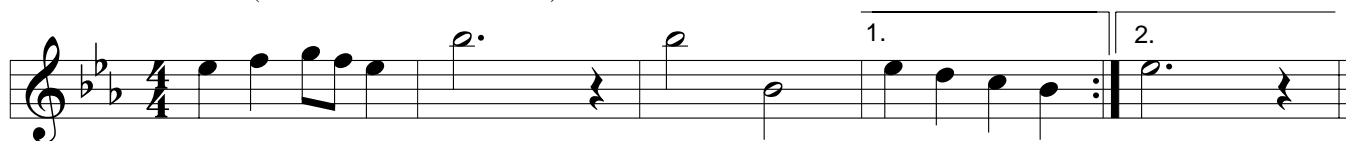
Lesson 9



The songs on this page are the first ones to use the note **B \flat** in two different *octaves* in the same song.

Big Top

CD #2 Tracks **13** ($\text{♩}=112$), **33** ($\text{♩}=100$), **49** (solos)
Intro: 2 measures (2 measure intro between solos)



Amazing Grace

CD #2 Tracks **14** ($\text{♩}=76$), **34** ($\text{♩}=66$)
Intro: 4 measures

a *triplet* has three notes played on one beat

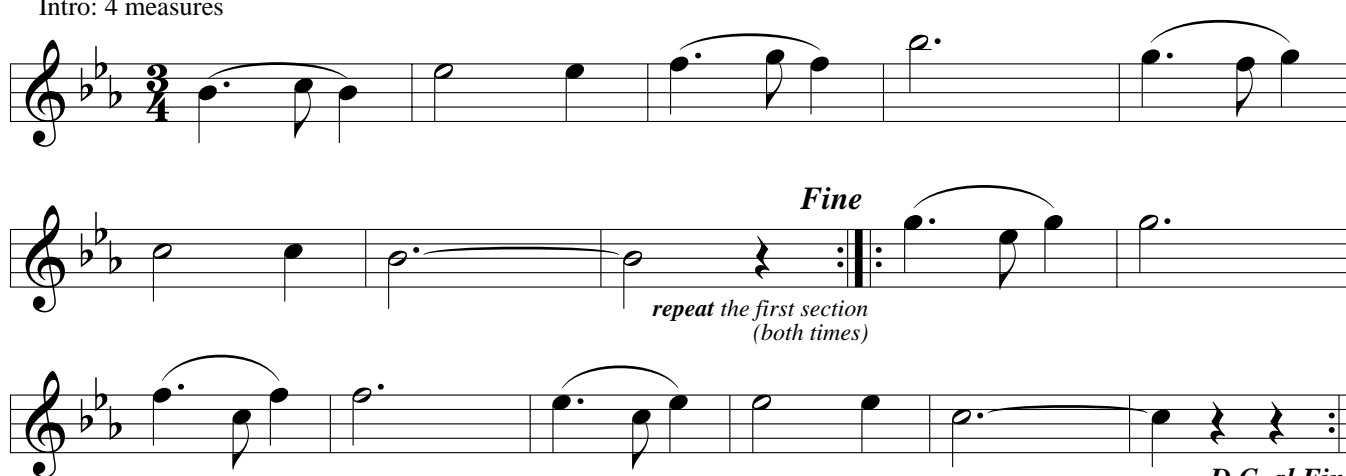
Traditional



The Skye Boat Song

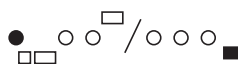
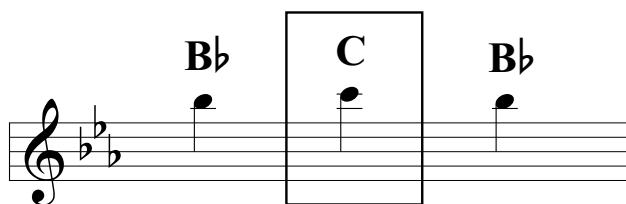
CD #2 Tracks **15** ($\text{♩}=138$), **35** ($\text{♩}=120$)
Intro: 4 measures

Traditional



D.C. al Fine
repeat the second section before doing the D.C.

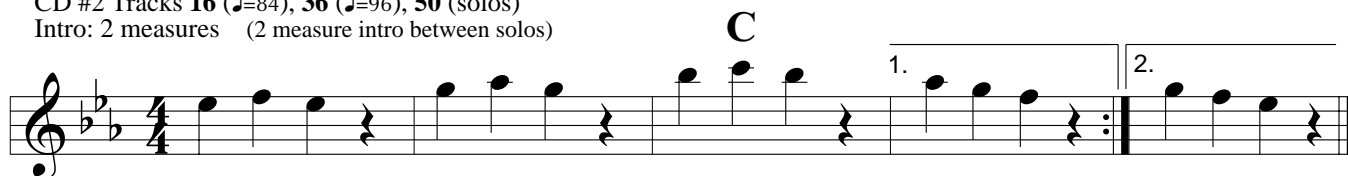
Lesson 10



This fingering is the same as for low C. You make a small adjustment with your lips to focus on the higher sound.

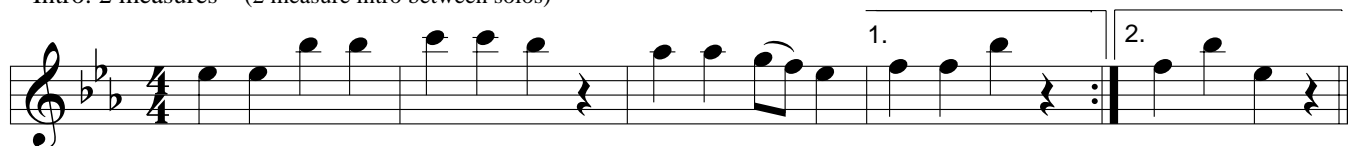
Reaching High

CD #2 Tracks 16 (♩=84), 36 (♩=96), 50 (solos)
Intro: 2 measures (2 measure intro between solos)



Star Gazing

CD #2 Tracks 17 (♩=104), 37 (♩=92), 51 (solos)
Intro: 2 measures (2 measure intro between solos)



Chili Cha Cha

CD #2 Tracks 18 (♩=116), 38 (♩=104), 52 (solos)
Intro: 4 measures (2 measure intro between solos)



Accents receive extra stress

Spirit Lodge

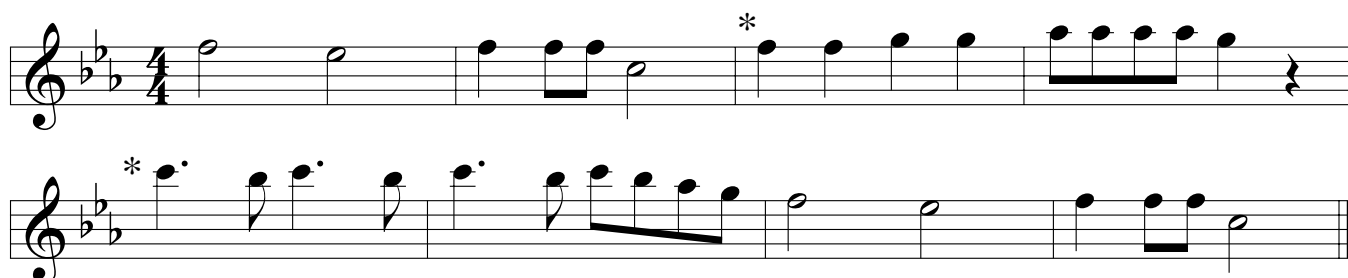
CD #2 Tracks 19 (♩=108), 39 (♩=96)
Intro: 2 measures



Hey Ho Nobody Home

CD #2 Tracks 20 (♩=104), 40 (♩=92)
Intro: 2 measures

Traditional (*- may be played as a round)



Flute
Oboe
Mallets

SoundStart 2001 for Band

Secret Hideaway

CD #2 Tracks **53** (♩=100), **54** (♩=112)

3

Group 1

5

Group 2

Group 1

Group 2

Group 1

Group 2

Group 1

Group 2

13

Group 1

Group 2

Group 1

Group 2

Group 1

Group 2

Group 1

Group 2

21

Group 1

Group 2

Group 1

Group 2

Group 1

Group 2

Together

Group 2

29

Group 1

Group 2

Group 1

Group 2

Group 1

Together

> > >